

TWI
College of Southern Idaho – Twin Falls
ON-CALL: 208-639-4554

AUDIO / VISUAL EQUIPMENT
LOG-IN AND SET-UP PROCEDURES

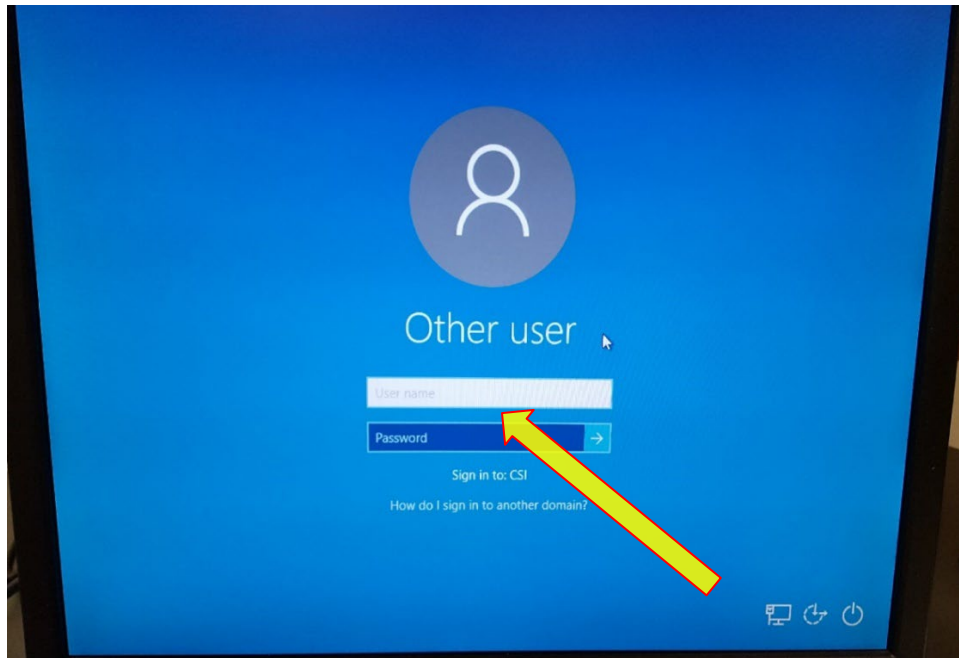
PROJECTOR:

- **Turn on** with remote **takes some time to power-up*

COMPUTER:

- **Power on** ** round button on center of front panel*

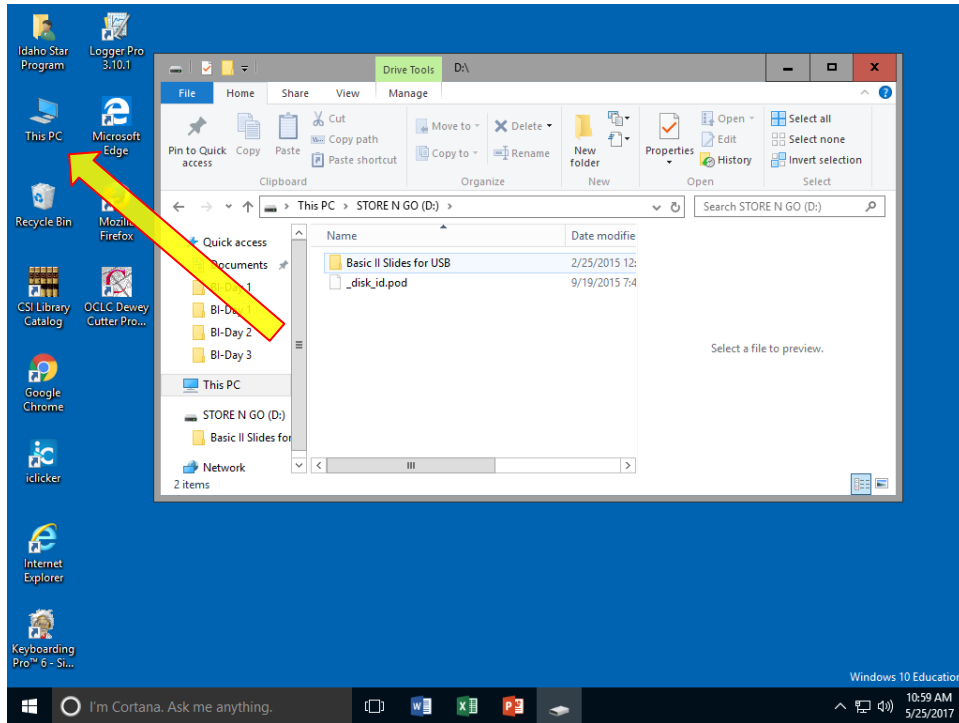
At the CSI – Log-In screen:



** [CNTRL]+[Alt]+[Delete] if needed*

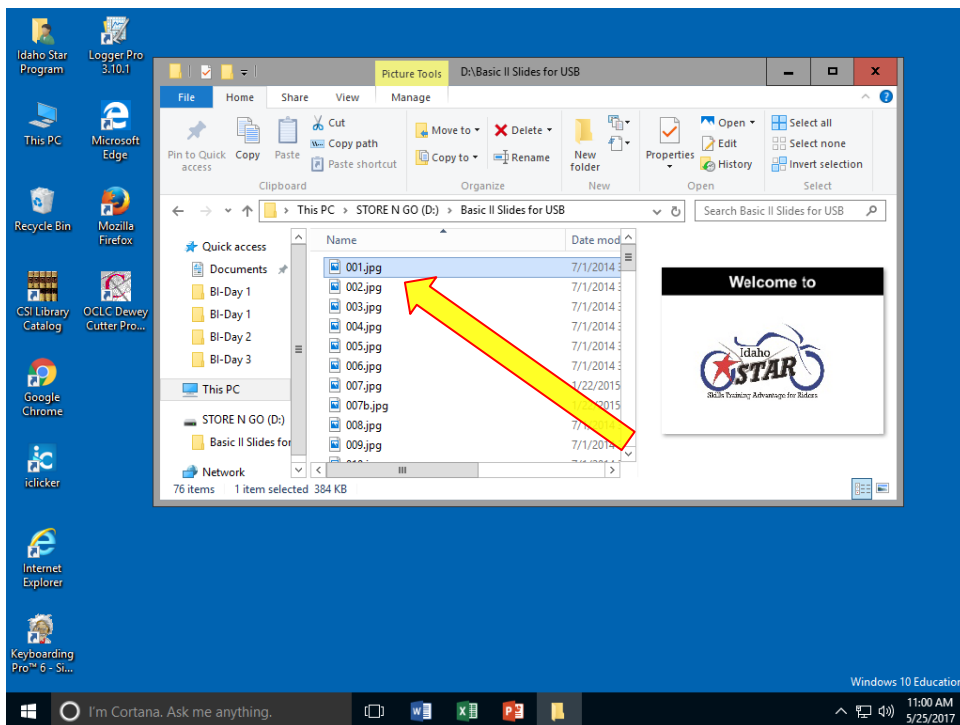
- **Log-in:**
 - **Username:** **Your CSI Email Acct** i.e. **(First Name Initial)(Last Name) @CSI.edu**
e.g. **SBeer@CSI.edu**
 - **Password:** **BIRTHDATE** i.e. **MMDDYYYY**
or, Personal Password
*if you have reset

- **Insert** USB Curricula drive
 - This should open a curricula directory window
 - **If not,**
 - double-click the desktop **THIS PC icon**
 - double-click the **USB Drive**

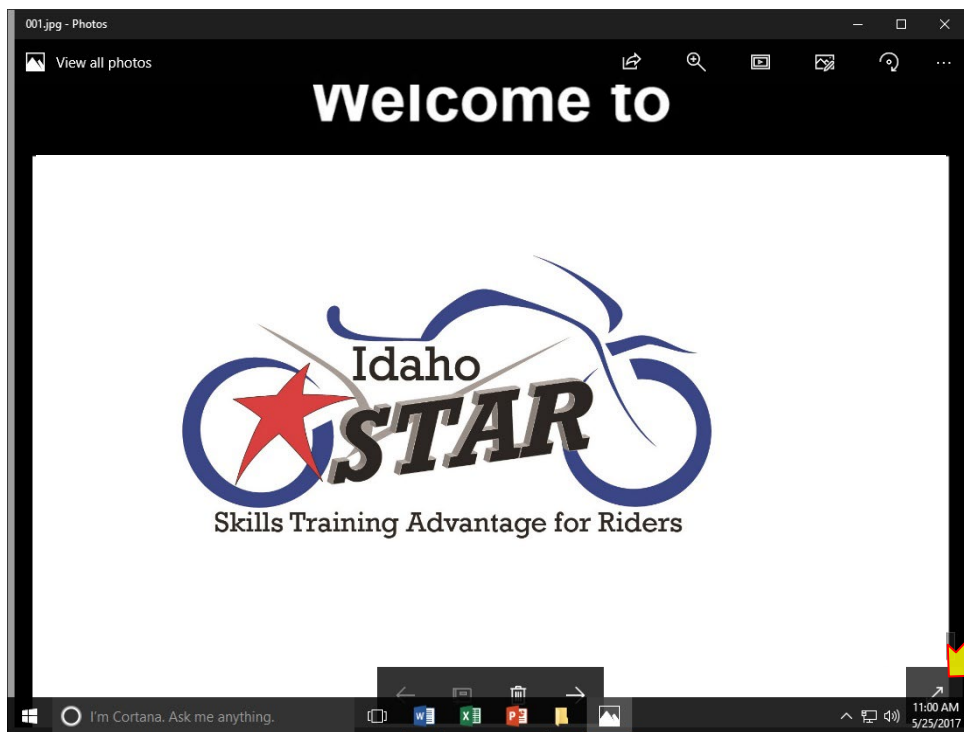


- Double-click *curricula* of class:
 - Basic I, Basic II, IRT Course
 - then, *Day 1*, *Day 2*, or *Day 3* if appropriate

- Double-click **1st slide** or “graphic” file



- Select  “full screen” (at bottom right of screen) to maximize graphic



To navigate slides/images:

- Use Clicker (with USB controller port in CPU) **please turn OFF when done*
- OR, use keyboard arrows (**←**, **→**)