

IDA

Bonneville High School, Idaho Falls

ON-CALL: 208-639-4554

| | |
|--|--|
| <p>Location: Bonneville High School 3165 E Iona Rd Idaho Falls, ID 83401</p> <p>Site Manager: Allen Cain</p> | <p>EMERGENCY INFORMATION: 1st call 911 2nd call On-Call</p> <p>“Where Am I” Card are kept in Blue Pouches.</p> <p>CLOSEST EMERGENCY FACILITY Eastern Idaho Regional 3100 Channing Way Idaho Falls, ID 83404</p> <p>ER: (208) 529-7910 Main: (208) 529-6111</p> |
| <p>ALARM/CODES: n/a</p> | |

| CLASSROOM | RANGE |
|---|---|
| <p>Location: Driver’s Education building at far end of main parking lot; 2nd floor. Use exterior stairway on right side</p> | <p>Location: Driver’s Education range – fenced area behind classroom</p> |
| <p>Access: Class keys are kept inside Container in key lock box.</p> | <p>Access:</p> |
| <p>Supplies: Kept in file cabinet in classroom.</p> | <p>Cordoning: Cone off west side of range per site cordoning map Cone off entrance to parking lot.</p> |
| <p>A/V: USB master should be in TV. If not, use USB from Blue Pouch -replace when finished. Spare in Container key lock box.</p> | <p>TOWING: Lindsay Towing (208) 523-6618</p> |
| <p>Restrooms: Port-A-Potty Combo: 3500</p> | <p>RESTROOMS: Port-A-Potty Combo: 3500</p> |
| <p>Trash Disposal: Take out to dumpster behind school. (Do not use trash cans by stairs.)</p> | <p>Trash Disposal: Take out to dumpster behind school. (Do not use trash cans by stairs.)</p> |

IDA
Bonneville High School, Idaho Falls
ON-CALL: 208-639-4554



= Range
- - - - -

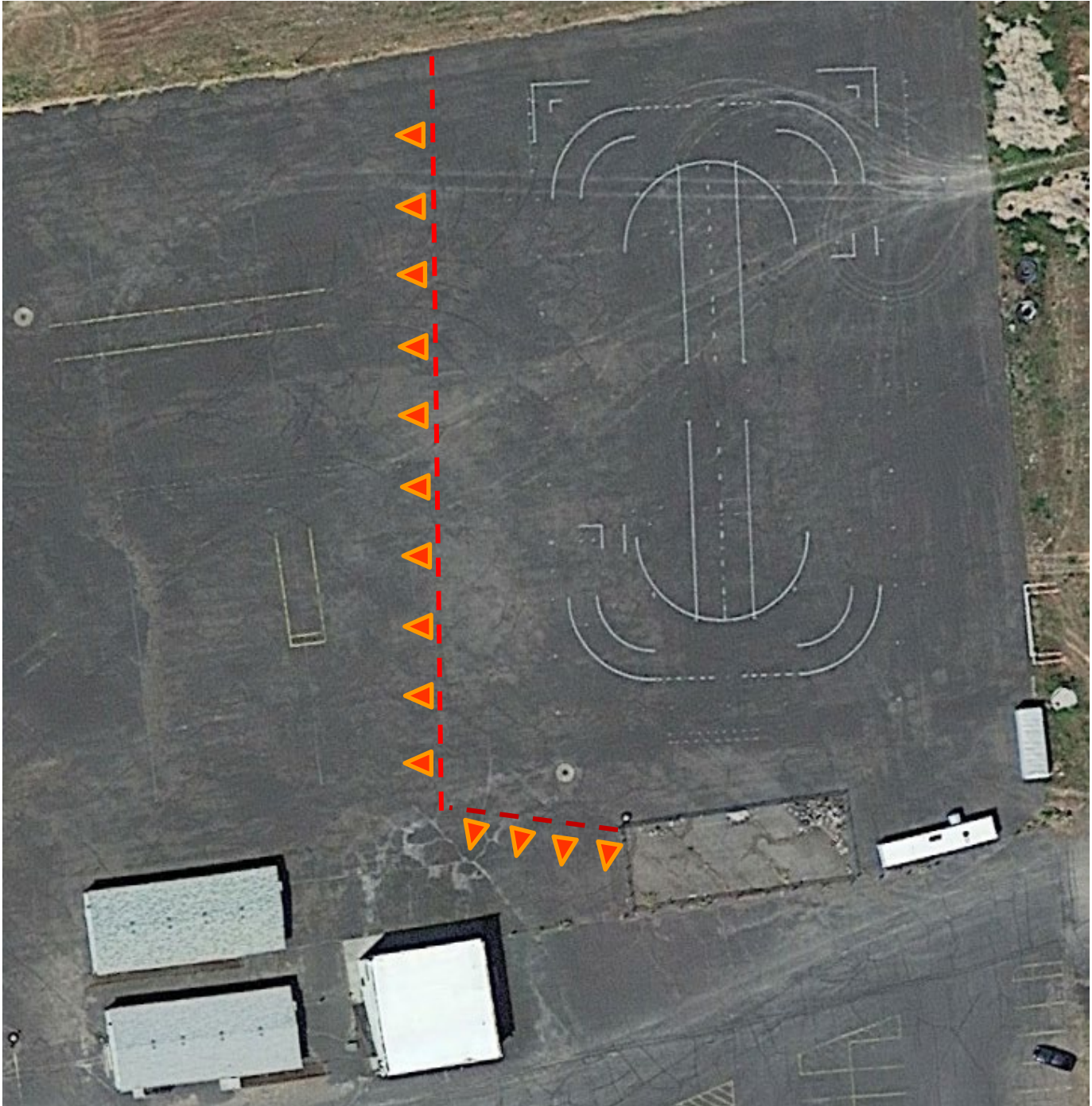
= Classroom
= Cone Off -Required

= Container

IDA
Bonneville High School, Idaho Falls

ON-CALL: 208-639-4554

CORDONING OFF RANGE



 = Required cordoning

NOTE: Number of cones on diagram may not reflect actual number of cones needed/used.