

MOU

Mountain Home Air Force Base

ON-CALL: 208-639-4554

<p>LOCATION: Mountain Home Air Force Base 366 Gunfighter Ave. Mountain Home, ID 83648</p> <p>OPS SUPPORT TEAM: Michael Lujan</p>	<p>EMERGENCY INFORMATION: 1st call 911 2nd call On-Call</p> <p>“Where Am I” Card in Blue Pouches</p> <p>CLOSEST EMERGENCY FACILITY 366th Medical Group 90 Hope Dr. MHAFB, ID 83648 ER : 208-828-7900</p>
--	--

Alarm/Code: Main Gate does not open until 7am.
Instructors who teach at MHAFB will be placed on an EAL list at the main gate under Idaho **STAR**. They will ask for your driver's license to make sure you are cleared when you pick up your pass. The pass is valid for the training season.

If you still have issues getting on base, please contact our sponsor Brian Reynolds at 208-590-1455 and explain you are an Instructor with Idaho **STAR** and they are not approving you access on base. He will handle it for you.

If you are still having issues, call On-Call.

If in a “commercial” vehicle (with any business/company stickers) you must use Grandview Gate and go through an inspection.

CLASSROOM	RANGE
<p>Location: Wing Safety Office Conference Room Room #1126 in the 366th Wing Headquarters Building #512</p>	<p>Location: Map with directions is attached</p>
<p>Access: You will need to get a key if the door is not already open</p> <p>Place “CLASS HERE” sign outside classroom to be seen from lot</p>	<p>Access: Range gate code = 1106</p>
<p>Supplies: Kept in black container tubs with Idaho STAR stickers on it</p>	<p>Cordoning: N/A</p>
<p>A/V: USB master should be in TV If not, use USB from Blue Pouch - replace when finished Spare in container key lock box</p>	<p>Towing: N/A</p>
<p>Restrooms: In hallway</p>	<p>Restrooms: Restroom on site</p>
<p>Trash Disposal: Take out to dumpster outside building</p>	<p>Trash Disposal: Take to dumpster by classroom</p>
<p>NOTE: Classroom schedule for MHAFB is different from regular Basic I. It is on the Instructor Resources website. Review before class.</p>	

MOU

Mountain Home Air Force Base

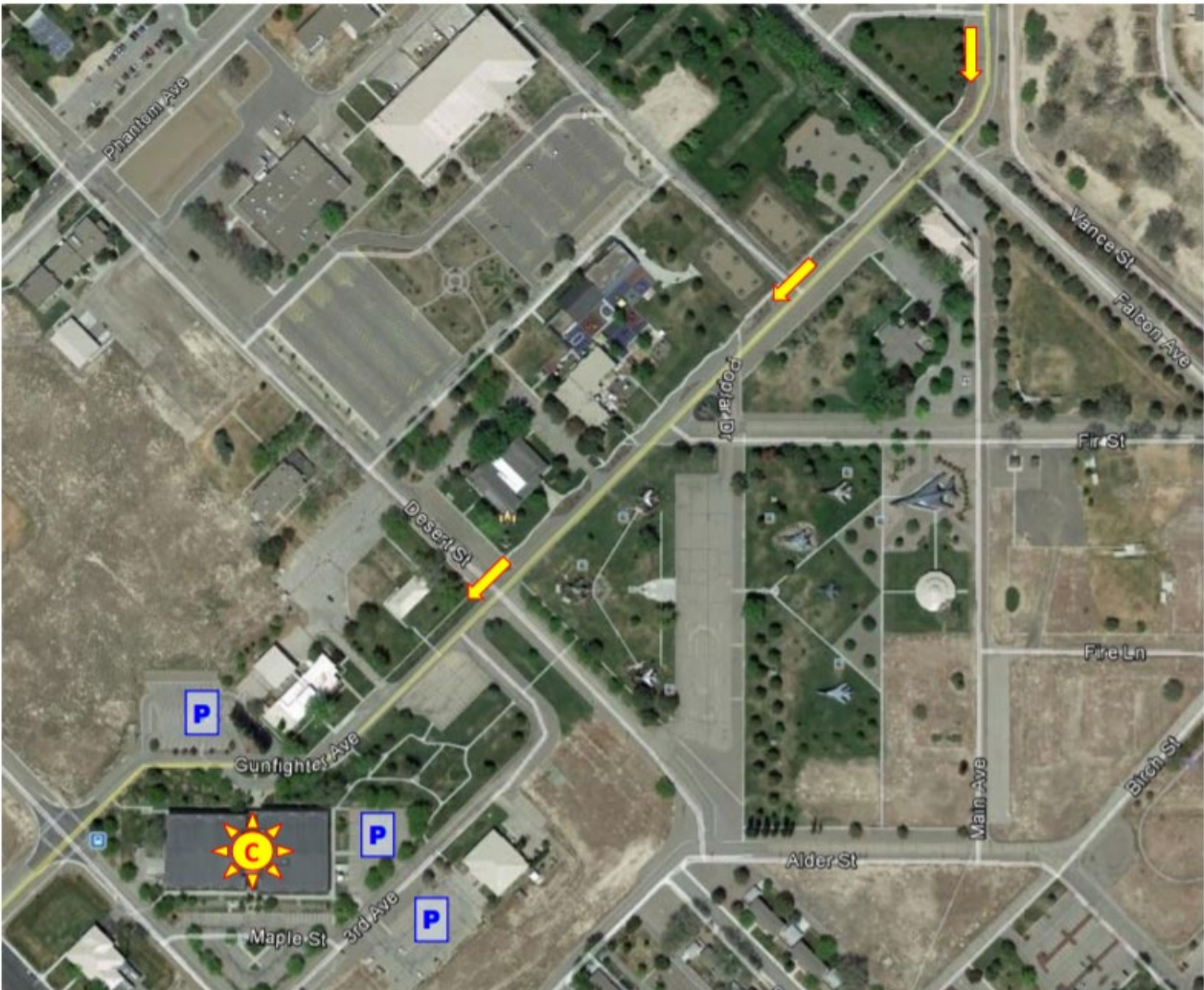
ON-CALL: 208-639-4554

CAMPUS MAP - CLASSROOM

DIRECTIONS:

From Main Gate off of W. 6th / Airbase Rd, check in and get your day/multi-day pass.

- Proceed on Gunfighter Ave (about 1 mile)
 - Pass Falcon Ave (beyond the slight right)
 - Pass Desert St.
- At B St., turn left
- At 3rd Ave., turn left and park where available



MOU

Mountain Home Air Force Base

ON-CALL: 208-639-4554

CAMPUS MAP – RANGE

From classroom within 366th Wing Headquarters Wing Safety Conference Room:

- Head SE, or left, on B Street
 - Pass 2nd Ave.
 - Pass 1st Ave / Birch St.
 - Pass Golf Course Loop
- As road bends slightly left, becoming Bomber Rd, turn right on to gravel road.
- Fire Training / Motorcycle Training site is on right.

