

# IDA

## Bonneville High School, Idaho Falls





### ON-CALL: 208-639-4554

<p><b>LOCATION:</b>          Bonneville High School          3165 E Iona Rd          Idaho Falls, ID 83401</p> <p><b>OPS SUPPORT STAFF:</b>          Allen Cain</p>	<p><b>EMERGENCY INFORMATION:</b>          1<sup>st</sup> call <b>911</b>          2<sup>nd</sup> call <b>On-Call</b></p> <p>“Where Am I” Card in Blue Pouch</p> <p><b>CLOSEST EMERGENCY FACILITY</b>          Eastern Idaho Regional          3100 Channing Way          Idaho Falls, ID 83404</p> <p><b>ER:</b> (208) 529-7910 <b>Main:</b> (208) 529-6111</p>
<p><b>ALARM/CODES:</b>          n/a</p>	

RANGE
<p><b>Location:</b>            Driver’s Education range – fenced area behind classroom</p>
<p><b>Access:</b></p>
<p><b>Cordoning:</b>            Cone off west side of range per site cordoning map. Angle off to fence to leave entry accessible and close off range area</p>
<p><b>TOWING:</b>            Lindsay Towing            (208) 523-6618</p>
<p><b>RESTROOMS:</b>            Port-A-Potty    Combo: <b>7827</b></p>
<p><b>Trash Disposal:</b>            Take out to dumpster behind school            (Do not use trash cans by stairs)</p>

**IDA**  
**Bonneville High School, Idaho Falls**  
**ON-CALL: 208-639-4554**

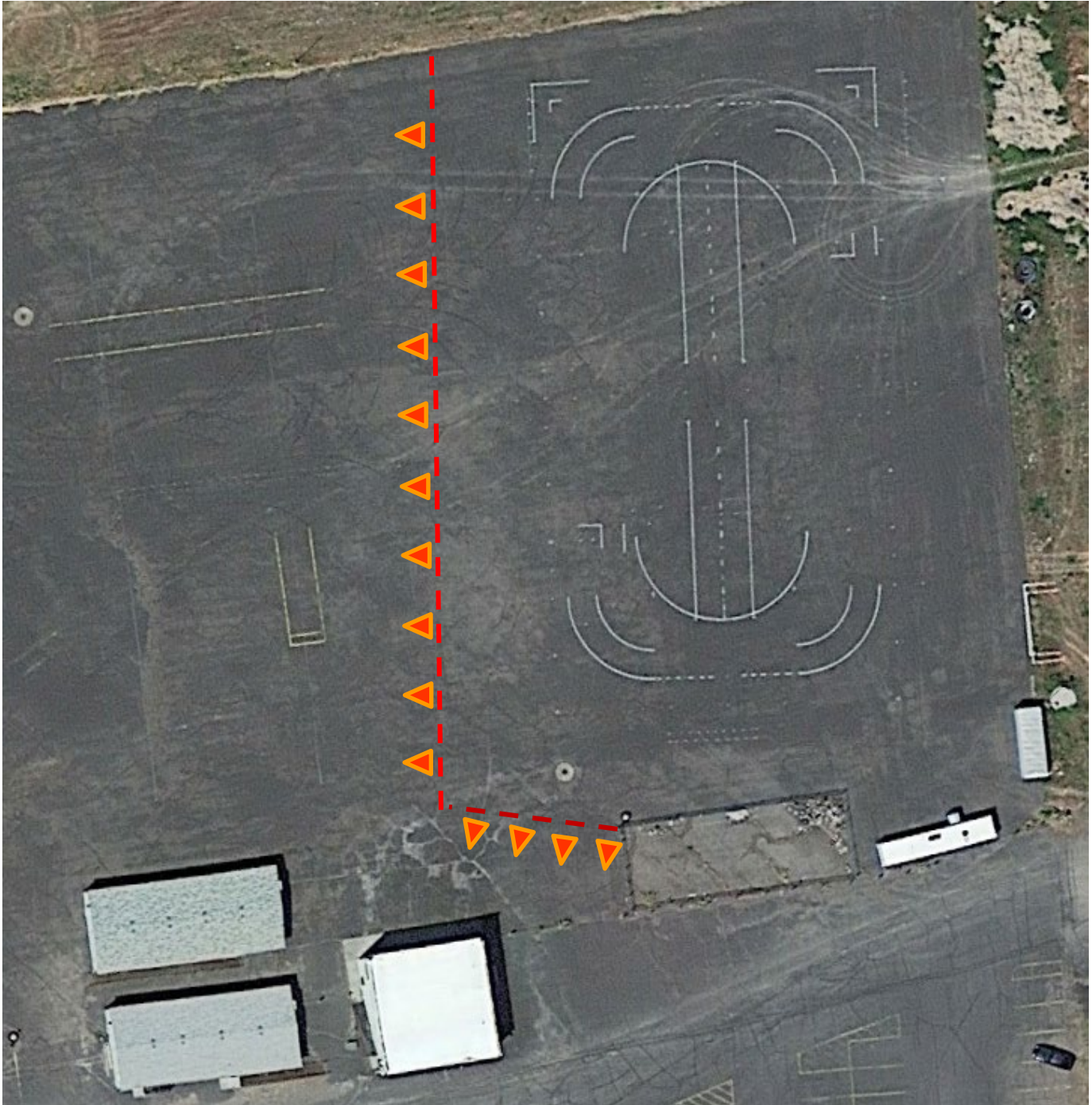


-  = Range
-  = Container
-  = Cones Required
-  = Dumpster



**IDA**  
**Bonneville High School, Idaho Falls**  
**ON-CALL: 208-639-4554**

**CORDONING OFF RANGE**



 = Required cordoning

*NOTE: Number of cones on diagram may not reflect actual number of cones needed/used.*